

How-To Tutorial: Embedding Captions in Windows Media

Captioning for Windows Media Player is pretty simple exercise. The standard way to provide captions for Windows Media content is to create a separate caption file (often called a SAMI file) which the media player picks up when it plays the movie file. See our separate tutorial on how to caption with SAMI files. While using SAMI files is simple and quick, care should be taken to ensure that the files for both the media content and the captioning stay in the same folder and that they are distributed together. If the caption file becomes separated from the media file, viewers will no longer have access to the captions.

To address this problem, there is an alternate way of captioning WMV files that allows you to embed the caption data directly in the WMV file, ensuring that it can never become separated from the media. This method uses a different type of caption file, and requires an extra step to "inject" the caption data into the WMV file ...this tutorial shows you how.

The first step is to generate the appropriate caption file for the job. Your CaptionSync account is where you will obtain the caption file that will be embedded in your WMV file. If you don't have a CaptionSync account you can create one at AST's [Getting Started](#) page.

Log into your CaptionSync account and go to the NEW CAPTIONING SUBMISSION page. Choose ADVANCED SETTINGS button to see the Output Types of captions available.

The screenshot shows the 'Captioning Submission' form in the Automatic Sync Technologies web application. The user is logged in as Tari Donohue, Org: Automatic Sync Technologies, LLC. The form is titled 'Captioning Submission' and includes the following fields and options:

- 1 Description ***: A text input field.
- 2 Transcription ***: Radio button options:
 - I need this program transcribed as part of the transcription and captioning bundle.
 - I have my own text transcript (TXT file).
- 3 Media File ***: A file selection field with a 'Choose File' button and 'no file selected' text.
- Advanced Settings...**: A button circled in red.
- Start Upload**: A button.

* is a required field

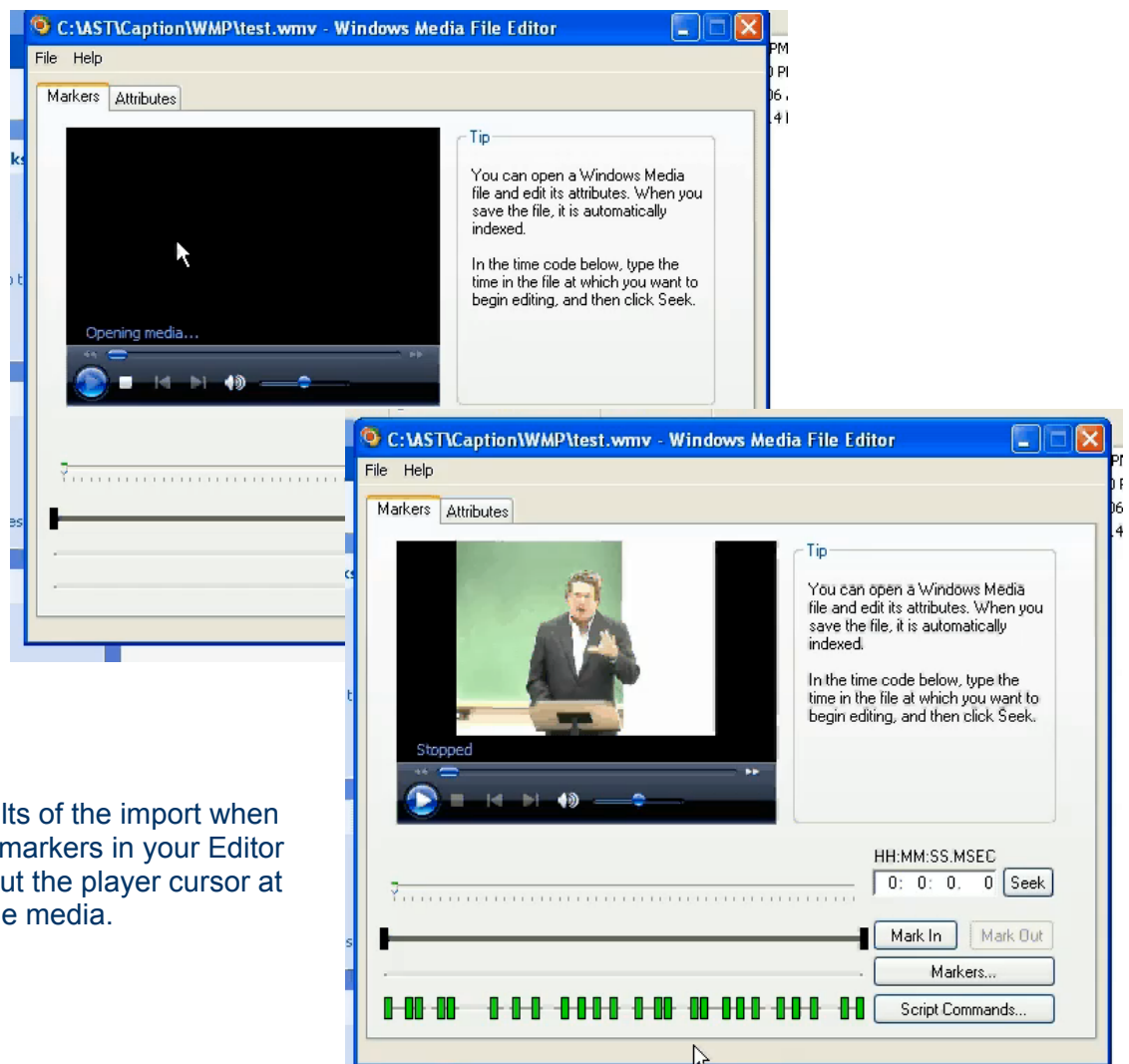
AST Home Contact AST

For this task, ensure the .WMP.TXT (WMP Text) caption output format is selected. Make any other changes you wish to the caption formatting options, then click the APPLY CHANGES button. If you will be captioning several files in this manner, you may wish to check the SAVE ABOVE SETTINGS AS DEFAULT box to that your changes are applied to future submissions as well.

Now complete your captioning submission by uploading your .WMV (Windows Media Video) file.

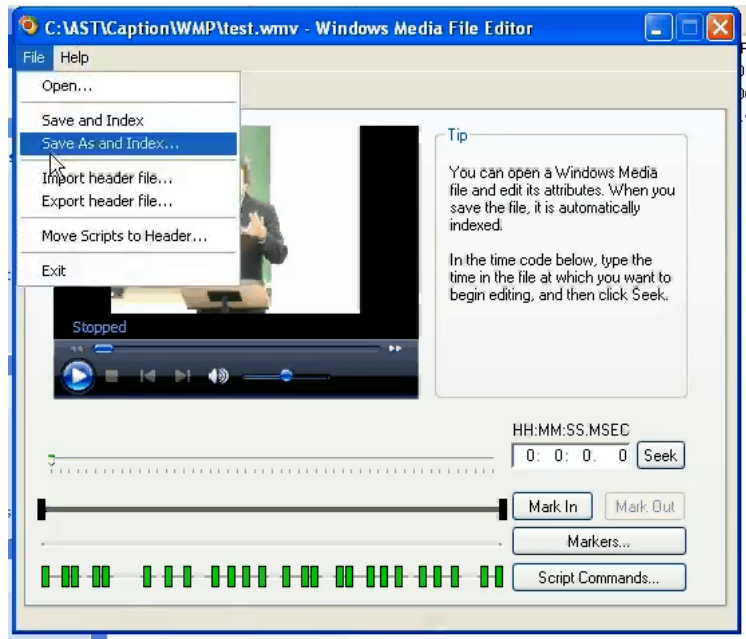
Once you get the caption files back, it is time to embed the result in your WMV file. The first step is to obtain the tools you'll need to embed the captions in the player.

1. Download and install the free Windows Media Encoder 9 from Microsoft:
www.microsoft.com/windows/windowsmedia/forpros/encoder/default.aspx
2. Launch the Windows Media File Editor.
3. Using the FILE / OPEN menu, open your .wmv file.
4. Now, import the caption file. You do this by choosing FILE / IMPORT HEADER FILE and select your .wmp.txt caption file that you got from CaptionSync.



You'll see the results of the import when you see timecode markers in your Editor window until you put the player cursor at the beginning of the media.

5. Save the captioned WMV file. Choose FILE / SAVE AS AND INDEX and choose a new name for the captioned file.



Now launch the new file in the Windows Media Player to review the captions.

Remember and remind your customers that Captions are visible only if enabled. To enable captions in Windows Media Player:

- Within the Player, choose the PLAY / LYRICS CAPTIONS SUBTITLES menu and make sure “ON IF AVAILABLE” is selected.
- In Windows Media Version 10 and greater, choose TOOLS / OPTIONS menu and the SECURITY tab:
 - Check “Show local captions when present”. Click APPLY.
 - Exit the Player and relaunch for the changes to take effect.

If you have questions, first see our ***CaptionSync Support Wiki*** under the ‘Help’ link in your account. It has answers to many of your queries about the workflow associated with CaptionSync.

Automatic Sync Technologies LLC

1-877-AST-SYNC

www.automaticsync.com

info@automaticsync.com